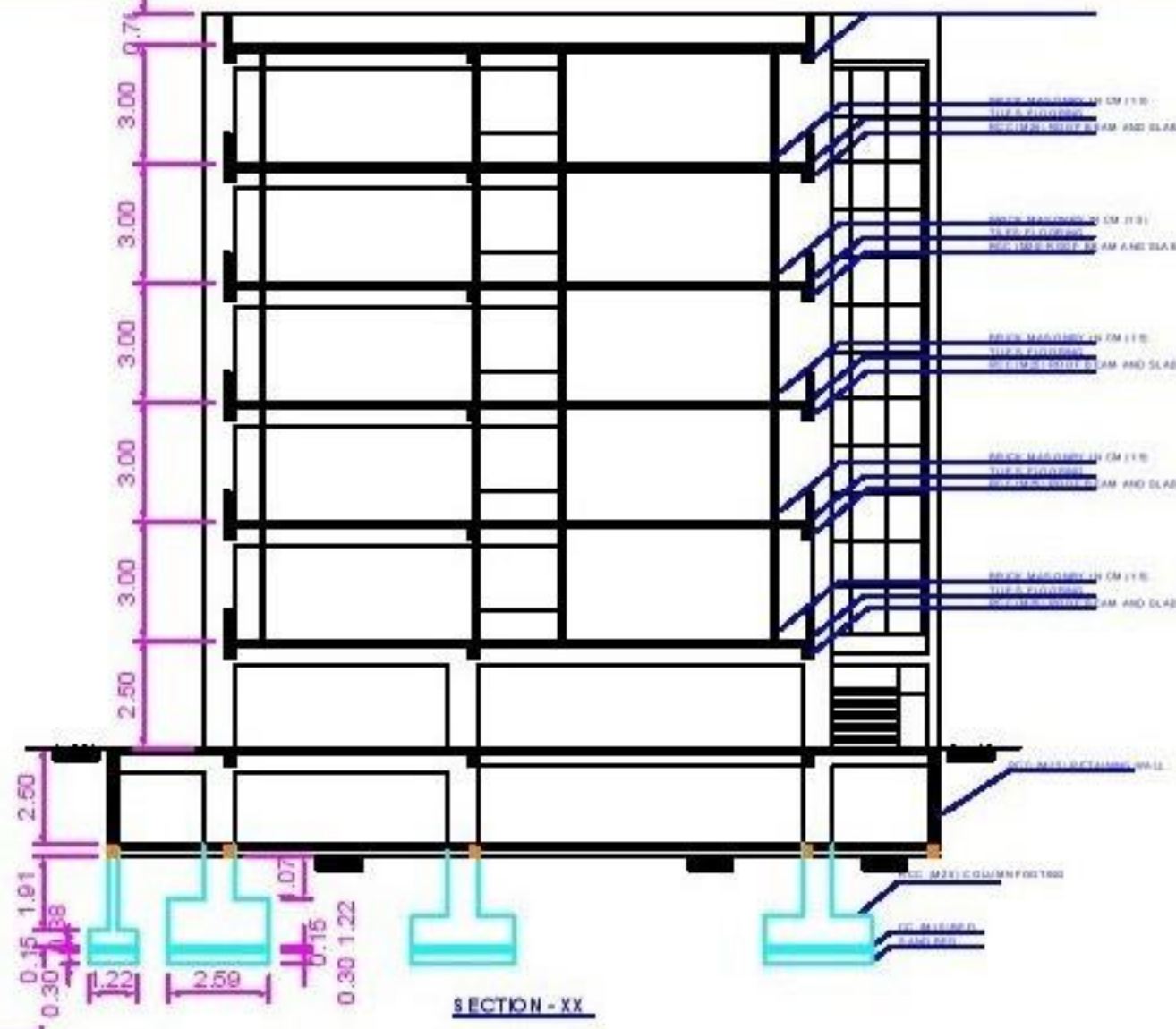
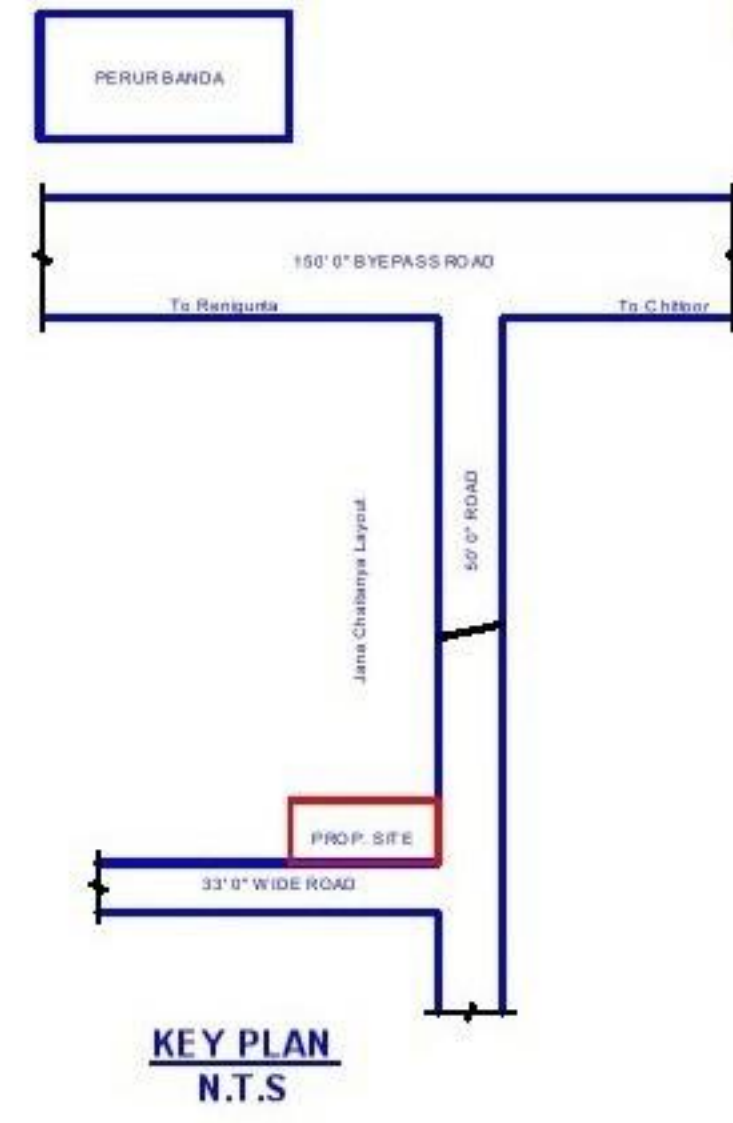




ELEVATION



SECTION - XX



KEY PLAN
N.T.S.

**PROPOSED
CONSTRUCTION OF
RESIDENTIAL
APARTMENTS IN S.NO.
247 / 4B IN
C.MALLAVARAM
VILLAGE &
PANCHAYAT,
TIRUPATI RURAL.**

REFERENCE	DESCRIPTION	UNIT	QUANTITY
D1	DOOR	1.80 x 2.10	1
D2	DOOR	0.91 x 2.10	1
D3	DOOR	0.76 x 2.10	1
W1	WINDOW	2.43 x 1.37	1
W2	WINDOW	2.57 x 1.37	1
W3	WINDOW	2.48 x 1.37	1
W4	WINDOW	2.36 x 1.37	1
W5	WINDOW	2.11 x 1.37	1
W6	WINDOW	1.22 x 1.37	1
V	VENTILATOR	0.91 x 0.91	1

AREA DETAILS	DESCRIPTION	AREA (Sq.M)
■	SITE	1889.56
■	TOT.FLOT	87.38
■	RECORDED CONSTRUCTION (8.16% ON SITE AREA)	1215.70
■	CELLAR FLOOR	793.88
■	STILT FLOOR	793.88
■	FIRST FLOOR	793.88
■	SECOND FLOOR	793.88
■	THIRD FLOOR	793.88
■	FOURTH FLOOR	793.88
■	FIFTH FLOOR	793.88
■	TOTAL	6043.88

NET PARKING AREA	DESCRIPTION	AREA (Sq.M)
P	PARKING (CELLAR)	590.00
P	PARKING (STILT)	574.80
V	VISITORS PARKING	62.20
TOTAL	TOTAL PARKING AREA	1227.00
T	TRANSPOSED AREA (AGE OVER PLINTH AREA + 12% OF T)	8.28

AREAS	DESCRIPTION	AREA (Sq.M)
STAR CASE (2 nos)	STAR CASE (2 nos)	25.84
LIFT (2 nos)	LIFT (2 nos)	12.08
UTILITY	UTILITY	5.76
UTILITY (S.C. & GENERATOR)	UTILITY (S.C. & GENERATOR)	63.00
RAMP	RAMP	99.16
WATCHMAN ROOM (STILT)	WATCHMAN ROOM (STILT)	20.07

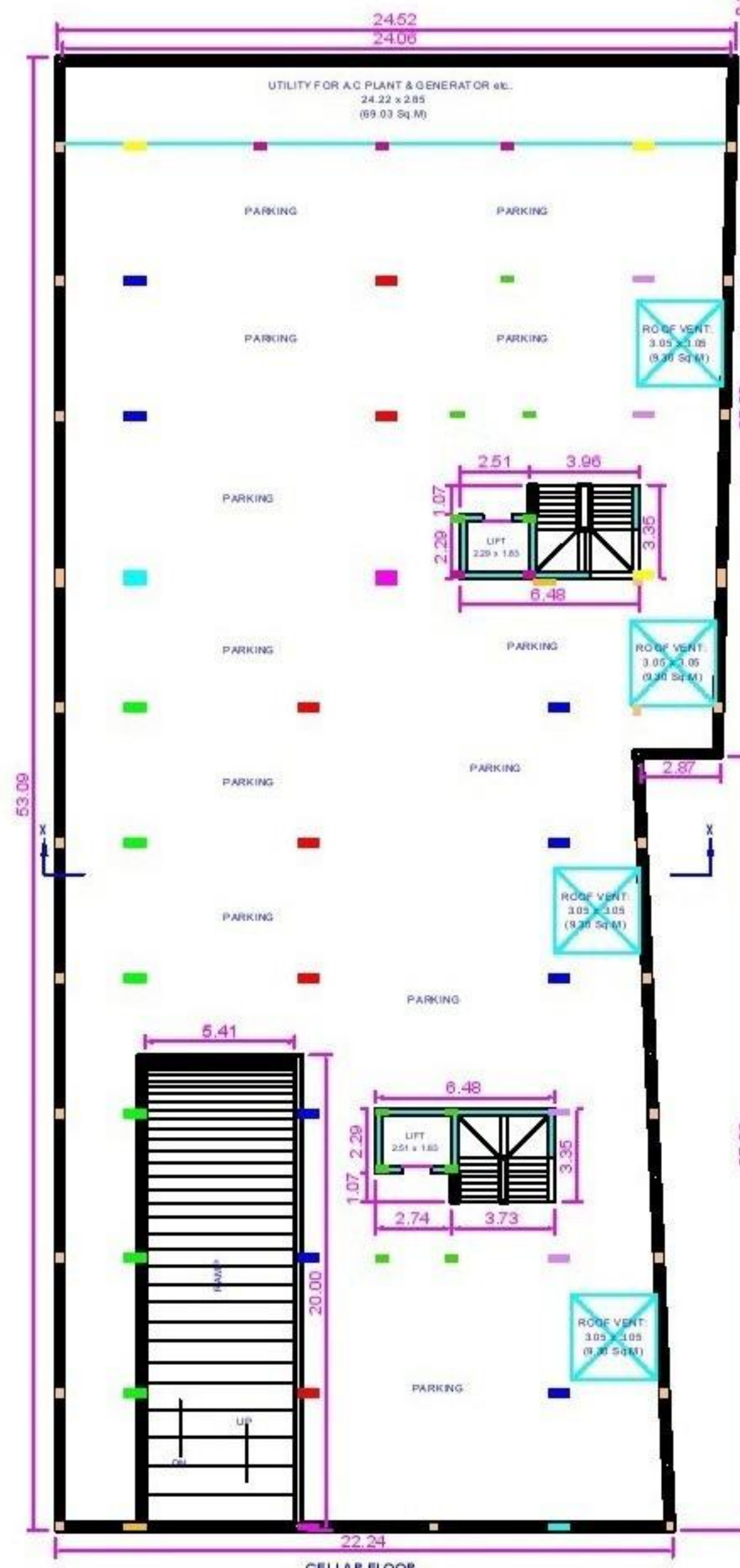
APPLICANT
M/S. USHA SANJEEVAREDDY TECH.PRV.S.PVT.LTD.
By: D. SANJEEVA REDDY
MANAGER/DIRECTOR

APPROVED
M/S. USHA SANJEEVAREDDY TECH.PRV.S.PVT.LTD.
(Signature)
D. SANJEEVA REDDY
MANAGER/DIRECTOR

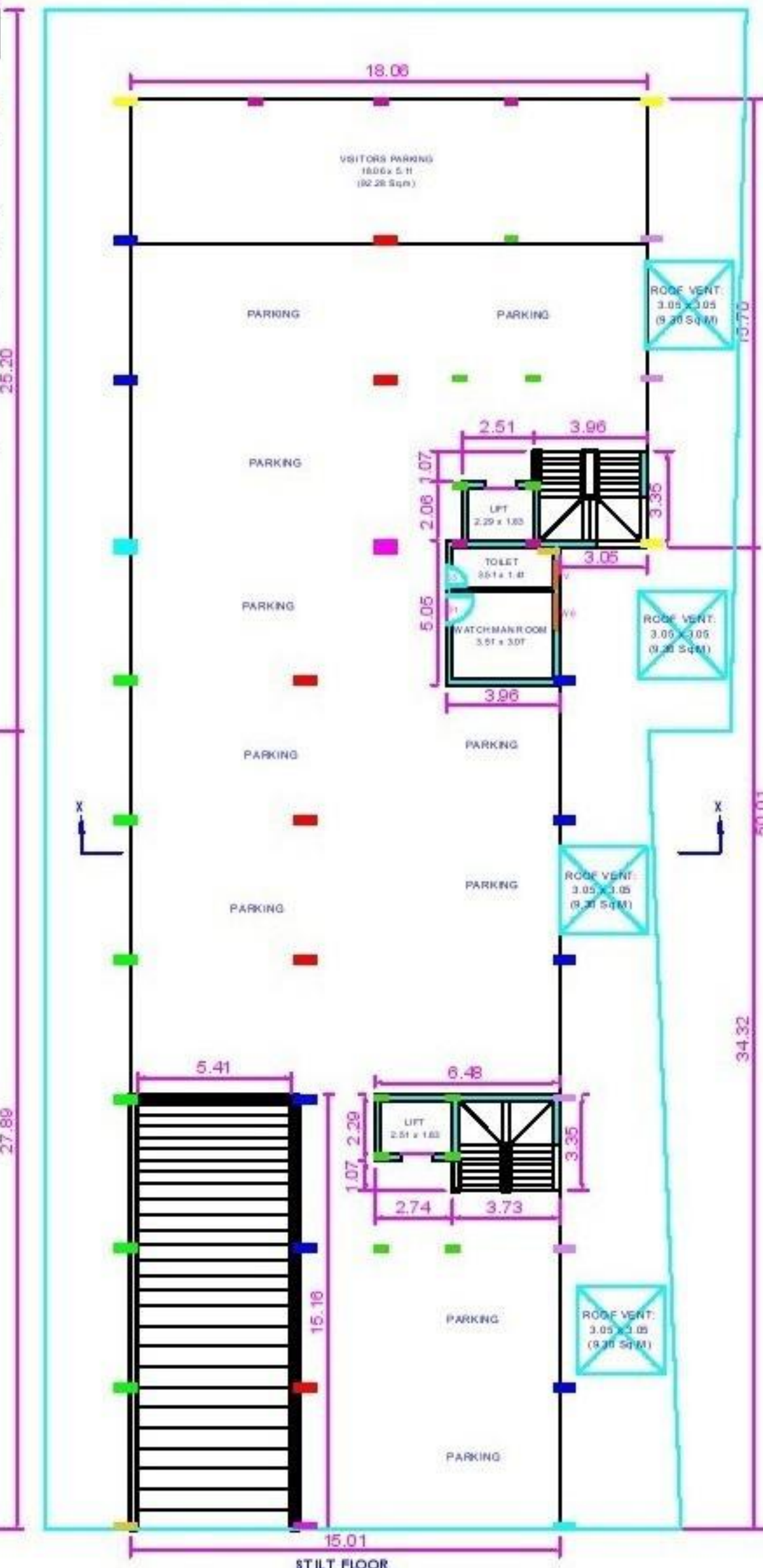
Approved With Approval of: M. S. Viswanath, Engineer, Urban Development Authority, Tirupati, Andhra Pradesh.
Sd/- M. S. Viswanath
M. S. VISWANATH
ENGINEER
URBAN DEVELOPMENT AUTHORITY
TIRUPATI

ENGINEER
M. S. VISWANATH
URBAN DEVELOPMENT AUTHORITY
TIRUPATI

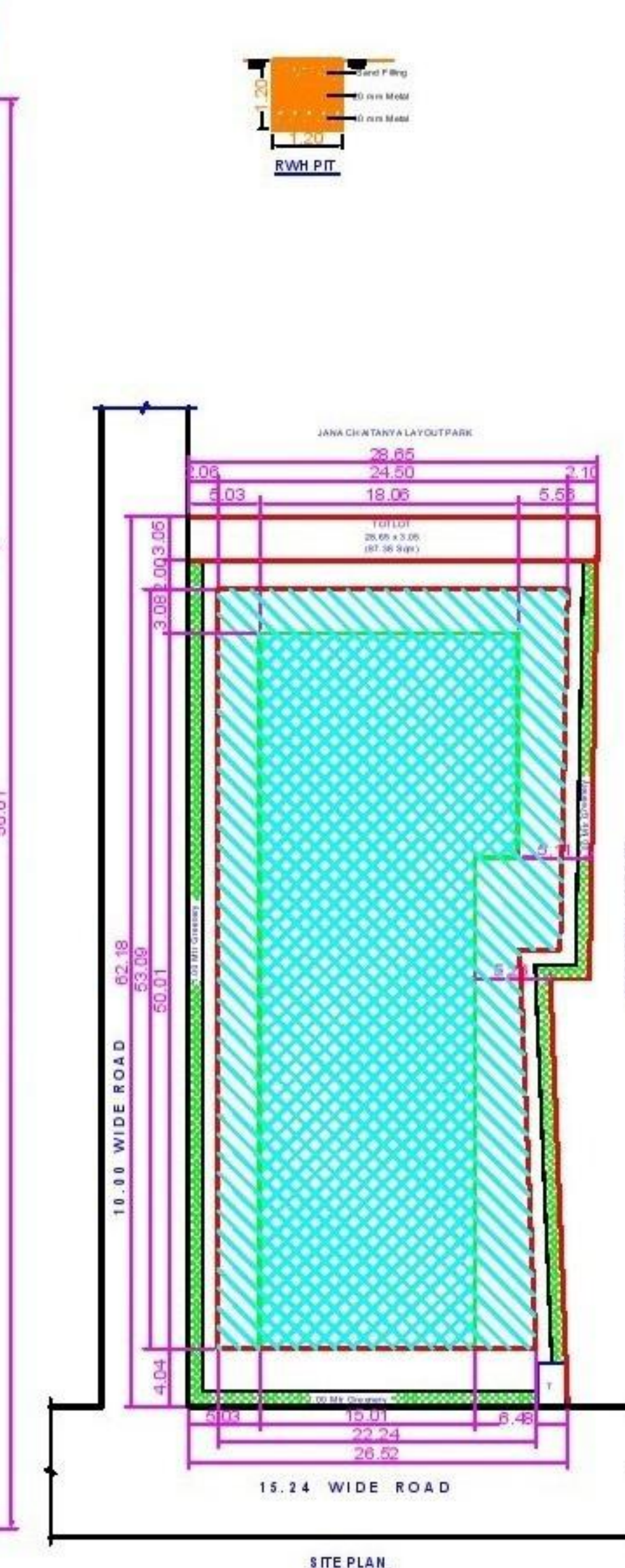
This plan is a revision of approved plan in 2014. Refer to 2014 plan for details.



CELLAR FLOOR



STILT FLOOR



SITE PLAN
1:200